

EATING INDEPENDENTLY TASTES BEST

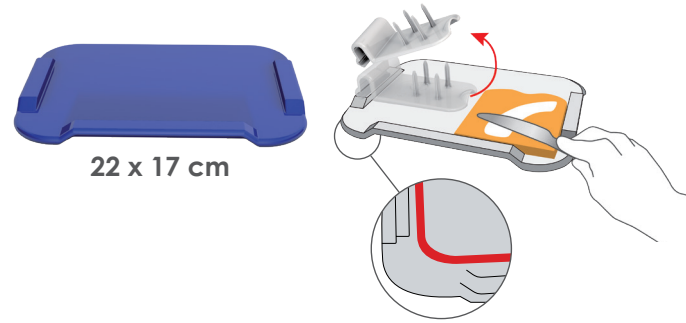
Shaky hands, limited mobility in the neck or the lack of a functional second hand rob people with impairments of their independence when eating and drinking. Obvious eating aids can make those affected feel excluded or exposed when eating together, which can lead to refusal to eat.

The colourful and functional tableware from ORNAMIN compensates for illness-related impairments and promotes independent eating and drinking - without stigmatizing. The aids incorporated into the design are not recognizable at first glance and can be used intuitively. This significantly increases the acceptance of those affected and boosts their self-esteem, enabling them to participate in meals independently and as normal. Eating together is simply more enjoyable and quality of life is improved.

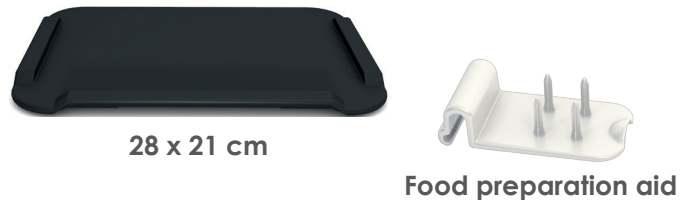


NON-SLIP BOARDS

- a non-slip ring on the base ensures a firm stand
- raised edge on three sides prevents the bread slipping
- the preparation aid is the ideal addition for bread rolls and other food
- Non-slip boards and the preparation aid can be used with one hand
- intuitively usable by left and right-handers



22 x 17 cm



28 x 21 cm

Food preparation aid



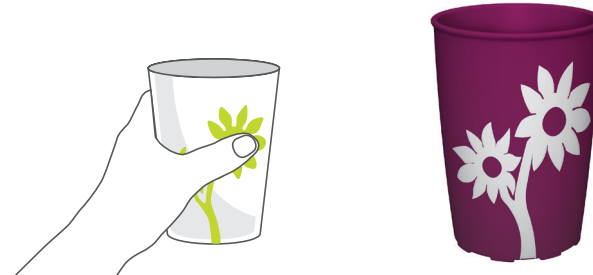
CUTLERY WITH NON-SLIP FUNCTION

- the fork and spoon have an S-shaped silhouette and the non-slip cushions ensure a good grip when holding the cutlery
- the knife's grip pad fits snugly in the palm of the hand and allows good cutting even with reduced gripping function in the hands
- the circular shape of the spoon makes it possible to eat from all sides without having to bend the cutlery
- made of high-quality stainless steel: rustproof, dimensionally stable, hygienic, acid-resistant



NON-SLIP CUP WITH FLOWER

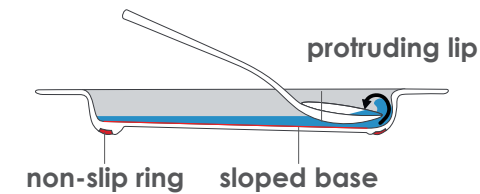
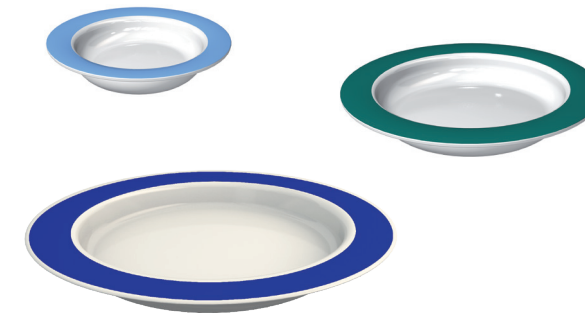
- floral decor with an innovative non-slip effect that enables a safe grip for weak hands
- stackable for space-saving storage
- fits many ORNAMIN drinking lids so that you can mix and match across the ranges



PLATES AND BOWL WITH SLOPED BASE

make eating easier due to:

- a sloped inner base
- an inconspicuous protruding lip
- non-slip ring on the base ensures the plate doesn't slide
- intuitively usable by left and right-handers
- available in three sizes: Ø 27 cm, Ø 20 cm, Ø 15.5 cm



2 CARE
MS



THE DISEASE WITH 1,000 FACES

Multiple sclerosis, or MS for short is a condition that affects your brain and spinal cord (your central nervous system). No two cases are alike; MS symptoms vary greatly in type and severity.

MS affects over 130,000 people in the UK and is the most common central nervous system condition among young adults. MS is a lifelong condition that cannot be cured and although living with MS is anything but easy, tips, tricks and useful everyday helpers can make life a lot easier and more enjoyable.

A healthier lifestyle can help manage some MS symptoms, improve moods, and keep the body working at its best.

FEATURES FOR INDEPENDENT EATING AND DRINKING

The many symptoms of MS including tremors, pins and needles, numbness, vision problems, weakness of limbs, reduced coordination, fatigue and balance problems can make independent living with MS a real challenge.

With its hidden features, ORNAMIN tableware brings back enjoyment to MS sufferers at the dining table. The coloured rim of the tableware provides a clear contrast to the white inner surface of the plate and to the dining table surface for better orientation. The plates, bowls, cups and boards are all intuitively designed so that they can be used easily. ORNAMIN's tableware's special functions are cleverly hidden in the design and provide perfect solutions for everyday challenges without stigma.

In this way, ORNAMIN tableware promotes and maintains independence when eating and drinking.

ORNAMIN EATING- AND DRINKING AIDS



...help with retaining and promoting independence thanks to their intuitive use (universal design).



...provide orientation for those with limited vision thanks to the colourful contrasts.



...reenable those affected and therefore provides relief for their carers and relatives.



...make eating and drinking easier for those with limited motor skills in hands, arms and neck.

You can find more information about eating and drinking with disabilities at: www.ornamin.co.uk/service/downloads-videos/



Use this link to view ORNAMIN eating and drinking aids/ disease patterns.



Follow this link for use and care instructions.

MORE INFORMATION ABOUT MS

The MS Society gives you all the information you need on their homepage at www.mssociety.org.uk and also in person as you can find a list of local support services on there. They can give you advice on benefits, nutrition and treatments.

In addition you can chat to others affected in the forum. It is often helpful to share your experience, so you feel that you are not alone.

Sabine, MS patient, blogger and film director, has to say about ORNAMIN tableware:



'The supportive features in the functional tableware by ORNAMIN are enlightening and in touch with everyday life. They help to make sure that any physical restrictions at the dining table remain invisible and the person affected doesn't lose the joy of eating and drinking. It is good to know that ORNAMIN thinks about the physical disabilities that dominate the lives of those with MS and develops solutions that can be used everyday and which do not stigmatise.'



Ornamin Ltd.

4200 Waterside Centre
Solihull Parkway
Birmingham Business Park
Birmingham B37 7YN

Phone +44 (0) 121 667 6279
team@ornamin.co.uk

www.ornamin.co.uk

Made in Germany



ORNAMIN